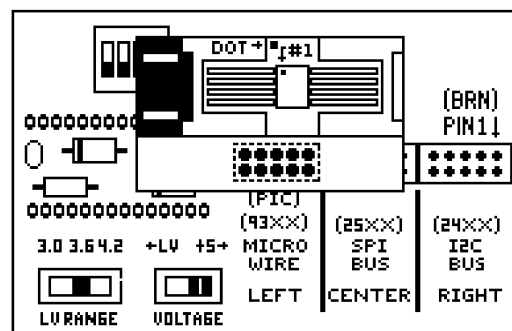


USING THE ASOIC8S SURFACE MOUNT SERIAL EPROM/EEPROM ADAPTER

The ASOIC8S surface mount serial EPROM/EEPROM adapter allows you work with 8 pin serial memory parts which are free standing and not attached to a circuit assembly. The adapter uses a positive lock clamshell socket to hold the part. The ASOIC8S is compatible with any existing adapter including the ASER-SM1A, CABLE8/DD and the STANDARD TERMINATOR. The ASOIC8S incorporates a 10 pin base which mates with the standard adapter 10 pin header.

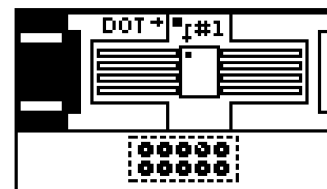
INSTALLING THE ADAPTER AND OPENING THE SOCKET

The adapter is installed by aligning the 10 pin base socket with the 10 pin header on the mating assembly. **NOTE:** PIN#1 on the 10 pin base is marked on the top of the ASOIC8S and also the mating assembly (BRN). Once the base is aligned press the ASOIC8S into place. Open the clamshell socket by pressing the right top of the lid to release the retaining mechanism. The clamshell will spring open.



INSTALLING THE CHIP INTO THE SOCKET

The ASOIC8S contains 8 horizontal brass pads which contact the 8 chip pins. The chip pins must be clean to assure positive electrical contact with the socket pads. Align the chip with the dimple or flat side on the left. There is a small paint dot on the socket which marks chip pin#1. Align the chip pin#1 with this dot. (See illustration). The clamshell socket incorporates dividers which help align the chip pins. Be sure you have properly aligned the chip pins such that it is properly centered and seated in the socket before the clamshell lid is closed. **NOTE:** If you wish you can install the chip into the clamshell socket and then press the ASOIC8S onto the mating assembly.



CLOSING THE CLAMSHELL LID

With the chip in place carefully close the clamshell lid until the retaining mechanism latches. **NOTE:** You may need to press the side of the retaining mechanism to cause the lid to latch. **NOTE:** After you are finished working with the chip be careful when you release the clamshell lid as the chip may lodge in the top of the clamshell.